

Produktinformation

Test indicator MarTest800 SGM



Product features:

- High-contrast dial face, sealed with O-ring
- Mineral glass viewing panel for best protection:
 - against cracking, scratching or damage caused by hot shavings
 - optimum resistance to solvents
- Matt chrome-plated protective casing with three integrated dovetail guide rails
- Shockproof measuring mechanism
- Anti-magnetic model
- Automatic adjustment to the contacting direction ensuring infallible readings
- Ball bearing mounted double lever
- Friction clutch overload protection



Artikel-Nr.: 4308200

Application:

- Measurement of concentricity, alignment, parallelism and flatness
- Centering of bores and shafts
- Parallel or perpendicular alignment of work pieces

Package contains:

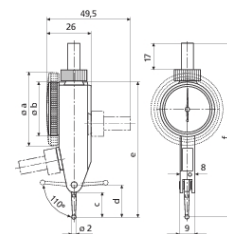
- case
- instruction manual
- spanner for changing the styli
- stylus dia. \varnothing 2 mm
- mounting shaft 800a8

Technische Daten

| | |
|--|-------------------|
| Measuring range from | -0,1 mm |
| Measuring range up to | 0,1 mm |
| Material Contact surface | carbide |
| Readings | 0,002 mm |
| Scale diameter | 38 mm |
| Type of dial face | 100-0-100 |
| Dial color | yellow |
| Measuring force | 0,15 N |
| Range per rev. | 0,2 mm |
| Span of error f_e (μm) | 3 μm |
| Total span of error f_{ges} (μm) | 4 μm |
| Hysteresis f_u (μm) | 2 μm |
| Partial measuring range f_t (μm) | 2 μm |
| Repeatability f_w (μm) | 1,5 μm |

Abmessungen

| | |
|------------------------|--|
| Notes dimension | * 800 SGM, 801 SGM, 801 SGE, 800 SRM ** 800 SM, 801 SM *** 800 SGE |
| Stylus length | 14,5 mm |



Produktinformation

Test indicator MarTest800 SGM

Zubehör

| Bezeichnung | Typ | Artikel-Nr. |
|-------------|---------|-------------|
| Stylus | 800 ts | 4305870 |
| Stylus | 800 ts | 4305850 |
| Stylus | 800 ts | 4305871 |
| Stylus | 800 tsr | 4309051 |
| Spanner | | 4305868 |