

# Produktinformation

## Test indicator MarTest800 SM



### Product features:

- High-contrast dial face, sealed with O-ring
- Mineral glass viewing panel for best protection:
  - against cracking, scratching or damage caused by hot shavings
  - optimum resistance to solvents
- Matt chrome-plated protective casing with three integrated dovetail guide rails
- Shockproof measuring mechanism
- Anti-magnetic model
- Automatic adjustment to the contacting direction ensuring infallible readings
- Ball bearing mounted double lever
- Friction clutch overload protection



Artikel-Nr.: 4308150

### Application:

- Measurement of concentricity, alignment, parallelism and flatness
- Centering of bores and shafts
- Parallel or perpendicular alignment of work pieces

### Package contains:

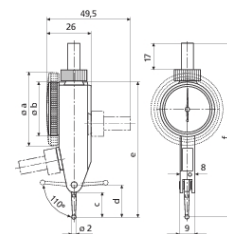
- case
- instruction manual
- spanner for changing the styli
- stylus dia.  $\varnothing$  2 mm
- mounting shaft 800a8

### Technische Daten

|  |                   |
|--|-------------------|
| <b>Measuring range from</b>  | -0,1 mm           |
| <b>Measuring range up to</b>   | 0,1 mm            |
| <b>Material Contact surface</b>  | carbide           |
| <b>Readings</b>  | 0,002 mm          |
| <b>Scale diameter</b>  | 27,5 mm           |
| <b>Type of dial face</b>   | 100-0-100         |
| <b>Dial color</b>  | yellow            |
| <b>Measuring force</b>   | 0,15 N            |
| <b>Range per rev.</b>  | 0,2 mm            |
| <b>Span of error <math>f_e</math> (<math>\mu\text{m}</math>)</b>           | 3 $\mu\text{m}$   |
| <b>Total span of error <math>f_{ges}</math> (<math>\mu\text{m}</math>)</b> | 4 $\mu\text{m}$   |
| <b>Hysteresis <math>f_u</math> (<math>\mu\text{m}</math>)</b>              | 2 $\mu\text{m}$   |
| <b>Partial measuring range <math>f_t</math> (<math>\mu\text{m}</math>)</b> | 2 $\mu\text{m}$   |
| <b>Repeatability <math>f_w</math> (<math>\mu\text{m}</math>)</b>           | 1,5 $\mu\text{m}$ |

### Abmessungen

|                        |  |
|------------------------|--|
| <b>Notes dimension</b> | * 800 SGM, 801 SGM, 801 SGE, 800 SRM<br>** 800 SM, 801 SM<br>*** 800 SGE |
| <b>Stylus length</b>   | 14,5 mm  |



# Produktinformation

## Test indicator MarTest800 SM

### Zubehör

| Bezeichnung | Typ     | Artikel-Nr. |
|-------------|---------|-------------|
| Stylus      | 800 ts  | 4305870     |
| Stylus      | 800 ts  | 4305850     |
| Stylus      | 800 ts  | 4305871     |
| Stylus      | 800 tsr | 4309051     |
| Spanner     |         | 4305868     |