

Produktinformation

Test indicator MarTest800 SA



Product features:

- High-contrast dial face, sealed with O-ring
- Mineral glass viewing panel for best protection:
 - against cracking, scratching or damage caused by hot shavings
 - optimum resistance to solvents
- Matt chrome-plated protective casing with three integrated dovetail guide rails
- Shockproof measuring mechanism
- Anti-magnetic model
- Automatic adjustment to the contacting direction ensuring infallible readings
- Ball bearing mounted double lever
- Friction clutch overload protection



Artikel-Nr.: 4301200

Application:

- Measurement of concentricity, alignment, parallelism and flatness
- Centering of bores and shafts
- Parallel or perpendicular alignment of work pieces

Package contains:

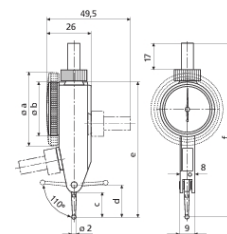
- case
- instruction manual
- spanner for changing the styli
- stylus dia. \varnothing 2 mm
- mounting shaft 800a6 (800 SA/SGA/SGB)
- mounting shaft 800a8

Technische Daten

Measuring range from	-0,25 mm
Measuring range up to	0,25 mm
Material Contact surface	carbide
Readings	0,01 mm
Scale diameter	27,5 mm
Type of dial face	25-0-25
Dial color	yellow
Measuring force	0,1 N
Range per rev.	0,5 mm
Span of error f_e (μm)	5 μm
Total span of error f_{ges} (μm)	8 μm
Hysteresis f_u (μm)	3 μm
Partial measuring range f_t (μm)	5 μm
Repeatability f_w (μm)	3 μm

Abmessungen

Notes dimension	* 800 SG, 800 SGA, 801 SG, 801 SGE, 801 SGI ** 800 S, 800 SA, 801 S1, 801 S
Stylus length	14,5 mm



Produktinformation

Test indicator MarTest800 SA

Zubehör

Bezeichnung	Typ	Artikel-Nr.
Stylus	800 ts	4305870
Stylus	800 ts	4305850
Stylus	800 ts	4305871
Stylus	800 tsr	4309051
Spanner		4305868