

magia

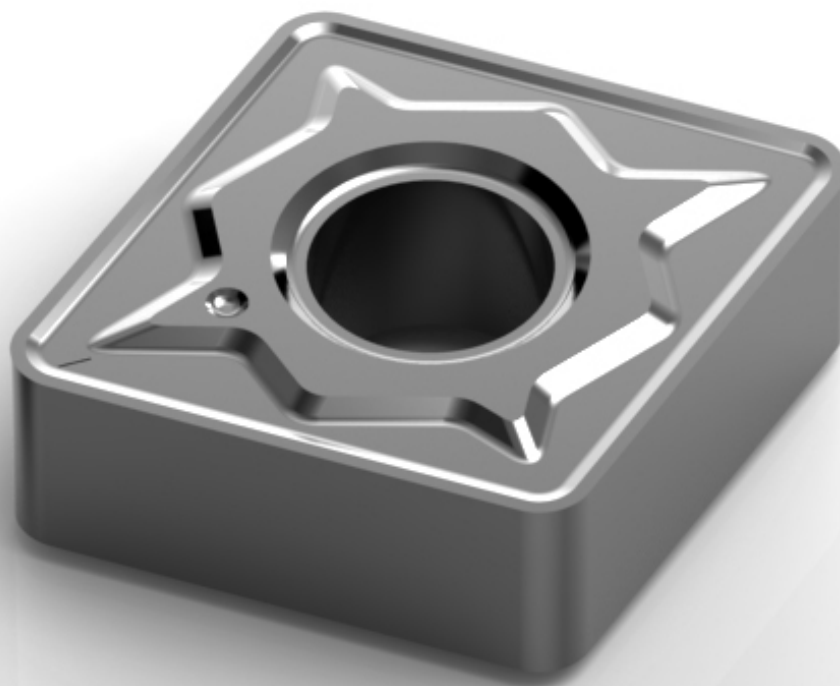
magia



LAMINA
TECHNOLOGIES

 Swiss Quality

NEW



We have broken the barrier of performance !



We did it before...



Lamina was the first cutting tools producer that:

- Originated the Multi Mat™ Concept, that allows the customer to machine nearly all materials with the same insert.
- Produced inserts with 8µm TiAlN, effective PVD coating, already in 2003.
- Focused on the needs of **small and medium size customers**, offering high quality, focused range of cutting tools, adapted for their needs.

And now, we are doing it again...

We have developed a complete new grade for Milling and Turning with **proprietary thick**, PVD coating (Patents pending).

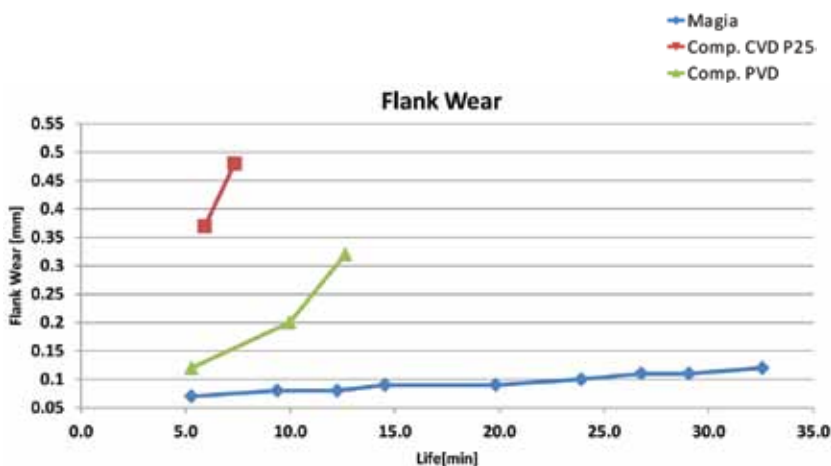
It has broken the barrier of performance in the world of cutting tools - significantly.

We call it magia

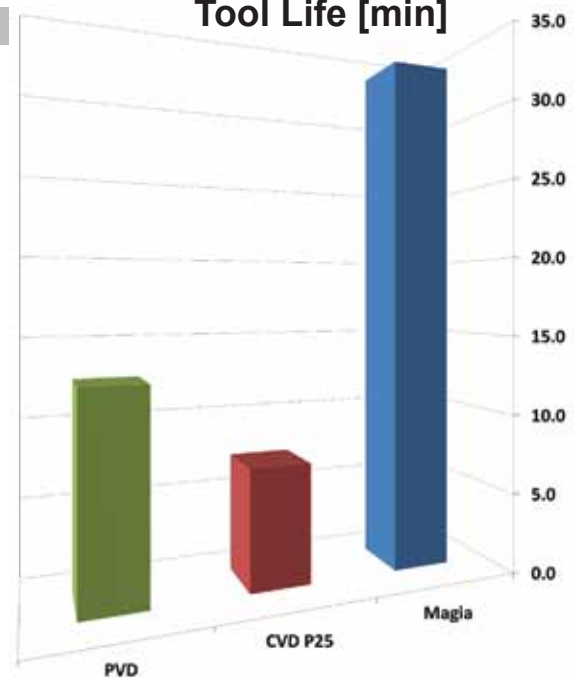
Tech-Center test report

Material	Insert	Vc	F	DOC	Coolant
42CrMo4	CNMG 120408	230	0.3	2	No

Flank Wear



Tool Life [min]



It's that simple, we just did !



What performance should you expect from Magia?



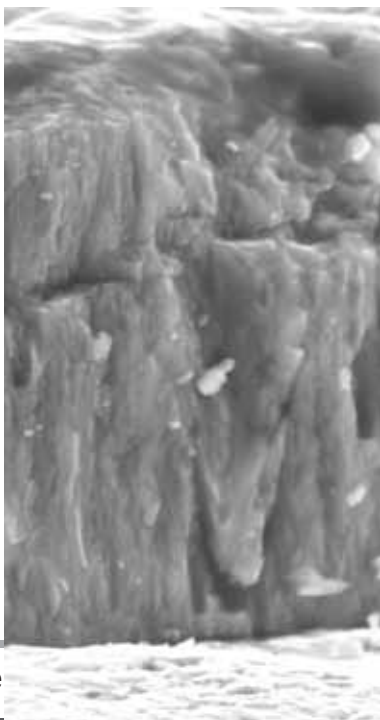
- 1. Multi-Mat™**
Magia line continues the Lamina concept of Multi Material™ inserts. So, each one of our Magia inserts will perform on multitude of materials.
- 2. Incredible tool life**
Magia inserts will out last competitors and give you, our customer, the cost saving you have been looking for.

SEM Images

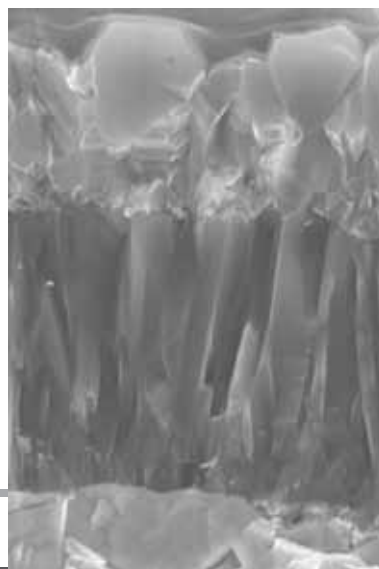
When we say thick, we mean thick!



Magia



Conventional CVD



Conventional PVD



Coating

Substrate



How do we do it?

- Specially designed sub-micron base powder.
- Sophisticated, highly accurate pressing and sintering.
- Unique edge preparation allowing control of honing to +/- 5µm from nominal.
- Our own, proprietary, ultra thick TiAlN PVD coating.
- Precise coating technology that allows to achieve even coating thickness, on the flank, nose and into the chip-breaker (with no shadow effects).

Just try Magia Line

- You can receive, completely **free of charge**, Magia line **samples**.
- Put Magia in competition with what you are using now and **compare** tool life and performance.
- **Contact us** for further information or meeting.

