




STROJNÍ KRÁTKÝ ZÁVITNÍK SE ŠROUBOVITOU DRÁŽKOU 40°

Short machine tap with right-hand spiral flutes 40°

 Kurze Maschinengewindebohrer mit 40° RSP, rechtsschneidend

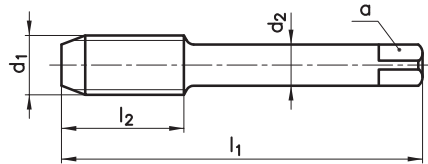
 Maschi a macchina corti con taglienti elicoidali destri 40°

 Машинный метчик со спиральной канавкой 40°

 40° Helis Kısa Makina Kılavuzu

TYPE
N

0600



M

60°



DIN
13

HSSE


DIN
352

ISO 2
6H

C
2-3

40°



d_1	P	l_1	l_2	d_2	a	z		
M 3	0,5	40	5	3,5	2,7	3	2,5	•
M 4	0,7	45	7	4,5	3,4	3	3,3	•
M 5	0,8	50	8	6	4,9	3	4,2	•
M 6	1	56	10	6	4,9	3	5	•
M 8	1,25	63	13	6	4,9	3	6,8	•
M 10	1,5	70	15	7	5,5	3	8,5	•
M 12	1,75	75	18	9	7	3	10,2	•

Řezné podmínky / Cutting conditions / V_c

P2.2	Konstrukční oceli / Structural steels <800N/mm ²	10-14
P2.3	Nelegované lité oceli / Plain cast steels <800N/mm ²	10-14
K6.2	Tvárná a temper. litina / Spher. graphite and mall. cast iron	4-7
N8.1	Legovaný hliník / Aluminium alloys Si<10%	14-20
N10.2	Slitiny mědi s dlouhou třískou / Long chipping copper alloys	6-10

narex
žďanice