





STROJNÍ ZÁVITNÍK SE ŠROUBOVITOU DRÁŽKOU 35°

Machine tap with right-hand spiral flutes 35°

 Maschinengewindebohrer mit 35° RSP, rechtsschneidend

 Maschi a macchina con taglienti elicoidali destri 35°

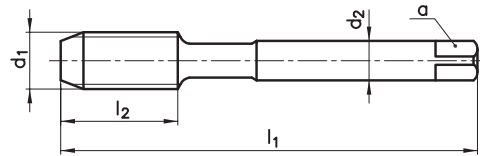
 Машинный метчик со спиральной канавкой 35°

 35° Helis Makina Kılavuzu


TYPE
N

4052

4062



TiN

d_1	tpi	l_1	l_2	d_2	a	z			
G 1/8	28	90	12	7	5,5	3	8,8	•	•
G 1/4	19	100	16	11	9	3	11,8	•	•
G 3/8	19	100	16	12	9	3	15,25	•	•
G 1/2	14	125	20	16	12	4	19	•	•
G 5/8	14	125	20	18	14,5	4	21	•	•
G 3/4	14	140	22	20	16	4	24,5	•	•
G 7/8	14	150	26	22	18	4	28,25	•	•
G 1	11	160	30	25	20	4	30,75	•	•
G 1 1/8	11	170	30	28	22	5	35,5	•	•
G 1 1/4	11	170	30	32	24	5	39,5	•	•
G 1 3/8	11	180	32	36	29	5	41,8	•	•
G 1 1/2	11	190	32	36	29	5	45,25	•	•
G 1 3/4	11	190	32	40	32	5	51,3	•	•
G 2	11	220	40	45	35	5	57,2	•	•

G



DIN
ISO 228

HSSE

DIN
5156



Řezné podmínky / Cutting conditions / V_c

P2.2	Konstrukční oceli / Structural steels <800N/mm ²	10-14	12-15
P2.3	Nelegované lité oceli / Plain cast steels <800N/mm ²	10-14	12-15
K6.2	Tvárná a temper. litina / Spher. graphite and mall. cast iron	4-7	6-8
N8.1	Legovaný hliník / Aluminium alloys Si<10%	14-20	15-30
N8.2	Legovaný hliník / Aluminium alloys Si>10%	14-20	14-20
N10.2	Slitiny mědi s dlouhou třískou / Long chipping copper alloys	6-10	10-15

narex[®]
zdánice