




# STROJNÍ ZÁVITNÍK SE ŠROUBOVITOU DRÁŽKOU 50°

Machine tap with right-hand spiral flutes 50°

 Maschinengewindebohrer mit 50° RSP, rechtsschneidend

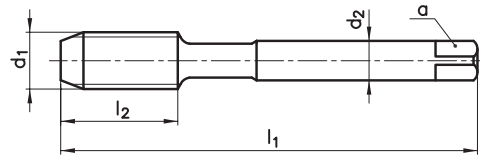
 Maschi a macchina con taglienti elicoidali destri 50°

 Машинный метчик со спиральной канавкой 50°

 50° Helis Makina Kılavuzu

TYPE  
UNI

4222NX



HL

$d_1$	tpi	$l_1$	$l_2$	$d_2$	a	z		
G 1/8	28	90	12	7	5,5	3	8,8	•
G 1/4	19	100	15	11	9	4	11,8	•
G 3/8	19	100	15	12	9	4	15,25	•
G 1/2	14	125	18	16	12	4	19	•
G 5/8	14	125	18	18	14,5	4	21	•
G 3/4	14	140	20	20	16	5	24,5	•
G 1	11	160	22	25	20	5	30,75	•

## Řezné podmínky / Cutting conditions / $V_c$

P1	Oceli / Steels <500N/mm <sup>2</sup>	18-22
P2	Oceli / Steels <800N/mm <sup>2</sup>	10-12
P3	Oceli / Steels <1200N/mm <sup>2</sup>	10-12
P4	Oceli / Steels <1400N/mm <sup>2</sup>	10-12
M5	Nerezavějící oceli / Stainless steels	10-12
K6	Šedá a temperovaná litina / Grey and spheroidal cast iron	12-18
N7	Čistý hliník / Unalloyed aluminium	26-32
N8	Legovaný hliník / Aluminium alloys	12-18
N9	Měď čistá / Pure copper	18-22
N10	Slitiny mědi / Copper alloys	10-12
N11	Zinek a slitiny zinku / Zinc and zinc alloys	10-12

