




# STROJNÍ ZÁVITNÍK SE ŠROUBOVITOU DRÁŽKOU 40°

Machine tap with right-hand spiral flutes 40°

 Maschinengewindebohrer mit 40° RSP, rechtsschneidend

 Maschi a macchina con taglienti elicoidali destri 40°

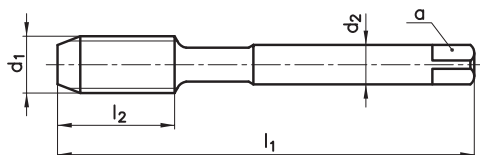
 Машинный метчик со спиральной канавкой 40°

 40° Helis Makina Kılavuzu

TYPE  
VA

4290

4260



OX

TiN

d <sub>1</sub>	P	l <sub>1</sub>	l <sub>2</sub>	d <sub>2</sub>	a	z	∅		
M 3	0,35	56	5	2,2	-	3	2,65		
M 3,5	0,35	56	6	2,5	2,1	3	3,15		
M 4	0,5	63	7	2,8	2,1	3	3,5		
M 5	0,5	70	8	3,5	2,7	3	4,5		
M 5,5	0,5	80	7	4	3	3	5		
M 6	0,75	80	10	4,5	3,4	3	5,2	•	•
M 6	0,5	80	10	4,5	3,4	3	5,5		
M 7	0,75	80	10	5,5	4,3	3	6,2		
M 8	1	90	13	6	4,9	3	7	•	•
M 8	0,75	80	10	6	4,9	3	7,2	•	•
M 8	0,5	80	10	6	4,9	3	7,5		
M 9	1	90	13	7	5,5	3	8		
M 9	0,75	80	10	7	5,5	3	8,2		
M 10	1,25	100	15	7	5,5	3	8,8		
M 10	1	90	12	7	5,5	3	9	•	•
M 10	0,75	90	12	7	5,5	3	9,2		
M 11	1	90	12	8	6,2	3	10		
M 11	0,75	90	12	8	6,2	3	10,2		
M 12	1,5	100	14	9	7	3	10,5	•	•
M 12	1,25	100	14	9	7	3	10,8		
M 12	1	100	14	9	7	3	11	•	•
M 13	1	100	15	11	9	3	12		
M 14	1,5	100	16	11	9	3	12,5	•	•
M 14	1,25	100	16	11	9	3	12,8		
M 14	1	100	16	11	9	3	13		
M 15	1,5	100	17	12	9	3	13,5		
M 15	1	100	16	12	9	3	14		
M 16	1,5	100	16	12	9	4	14,5	•	•
M 16	1	100	16	12	9	4	15		
M 17	1,5	100	17	12	9	4	15,5		


## Řezné podmínky / Cutting conditions / V<sub>c</sub>


P3.1	Cement. a nitr. / Case hardened and nitriding steels	3-5	6-8
P3.3	Nástrojové oceli / Tool steels		6-8
M5.1	Nerezavějící oceli / Stainless steels 450-800N/mm <sup>2</sup>	4-7	8-14
M5.2	Nerezavějící oceli / Stainless steels 600-1000N/mm <sup>2</sup>	3-5	6-10
K6.2	Tvárná a temper. litina / Spher. graphite and mall. cast iron		7-10
N9.1	Měď čistá / Pure copper		8-12
N10.2	Slitiny mědi s dlouhou třískou / Long chipping copper alloys		10-15




# STROJNÍ ZÁVITNÍK SE ŠROUBOVITOU DRÁŽKOU 40°

Machine tap with right-hand spiral flutes 40°

 Maschinengewindebohrer mit 40° RSP, rechtsschneidend

 Maschi a macchina con taglienti elicoidali destri 40°

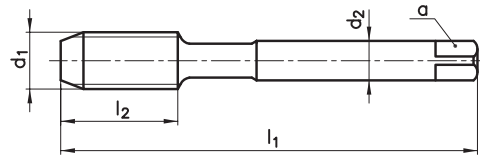
 Машинный метчик со спиральной канавкой 40°

 40° Helis Makina Kılavuzu

TYPE  
VA

4290

4260



OX

TiN

MF




DIN  
13

HSSE

DIN  
374

ISO 2  
6H



$d_1$	P	$l_1$	$l_2$	$d_2$	a	z		OX	TiN
M 17	1	100	16	12	9	4	16		
M 18	2	125	20	14	11	4	16		
M 18	1,5	110	20	14	11	4	16,5	•	•
M 18	1	110	20	14	11	4	17		
M 20	2	140	20	16	12	4	18		
M 20	1,5	125	20	16	12	4	18,5	•	•
M 20	1	125	20	16	12	4	19		
M 22	2	140	20	18	14,5	4	20		
M 22	1,5	125	20	18	14,5	4	20,5		
M 22	1	125	20	18	14,5	4	21		
M 24	2	140	22	18	14,5	4	22		
M 24	1,5	140	22	18	14,5	4	22,5		
M 24	1	140	22	18	14,5	4	23		
M 25	1,5	140	22	18	14,5	4	23,5		
M 26	1,5	140	22	18	14,5	4	24,5		
M 27	2	140	22	20	16	4	25		
M 27	1,5	140	22	20	16	4	25,5		
M 27	1	140	22	20	16	4	26		
M 28	2	140	22	20	16	4	26		
M 28	1,5	140	22	20	16	4	26,5		
M 30	2	150	26	22	18	4	28		
M 30	1,5	150	26	22	18	4	28,5		
M 30	1	150	26	22	18	4	29		

## Řezné podmínky / Cutting conditions / $V_c$

P3.1	Cement. a nitr. / Case hardened and nitriding steels	3-5	6-8
P3.3	Nástrojové oceli / Tool steels		6-8
M5.1	Nerezavějící oceli / Stainless steels 450-800N/mm <sup>2</sup>	4-7	8-14
M5.2	Nerezavějící oceli / Stainless steels 600-1000N/mm <sup>2</sup>	3-5	6-10
K6.2	Tvárná a temper. litina / Spher. graphite and mall. cast iron		7-10
N9.1	Měď čistá / Pure copper		8-12
N10.2	Slitiny mědi s dlouhou třískou / Long chipping copper alloys		10-15

**narex**  
zdánice