




STROJNÍ ZÁVITNÍK SE ŠROUBOVITOU DRÁŽKOU 40°

Machine tap with right-hand spiral flutes 40°

 Maschinengewindebohrer mit 40° RSP, rechtsschneidend

 Maschi a macchina con taglienti elicoidali destri 40°

 Машинный метчик со спиральной канавкой 40°

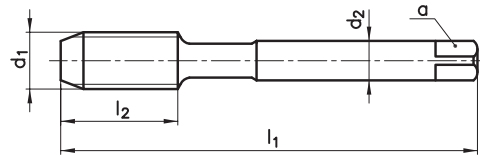
 40° Helis Makina Kılavuzu

TYPE
N

4050NX


4090NX

4070NX



OX

TiAIN

d_1	P	l_1	l_2	d_2	a	z				
M 3	0,5	56	5	2,2	-	3	2,5			
M 4	0,7	63	7	2,8	2,1	3	3,3			
M 5	0,8	70	8	3,5	2,7	3	4,2			
M 6	1	80	10	4,5	3,4	3	5			
M 8	1,25	90	13	6	4,9	3	6,8			
M 10	1,5	100	15	7	5,5	3	8,5			
M 12	1,75	110	18	9	7	3	10,2	•	•	•
M 14	2	110	20	11	9	3	12	•	•	•
M 16	2	110	20	12	9	3	14	•	•	•
M 18	2,5	125	25	14	11	4	15,5	•	•	•
M 20	2,5	140	25	16	12	4	17,5	•	•	•
M 22	2,5	140	25	18	14,5	4	19,5			
M 24	3	160	30	18	14,5	4	21			
M 27	3	160	30	20	16	4	24			
M 30	3,5	180	35	22	18	4	26,5			
M 33	3,5	180	35	25	20	4	29,5			
M 36	4	200	40	28	22	4	32			



Řezné podmínky / Cutting conditions / V_c

P1.1	Konstrukční oceli / Structural steels <500N/mm ²	8-10	10-12	10-12
P1.2	Nelegované lité oceli / Plain cast steels <500N/mm ²	8-10	10-12	10-12
P2.1	Automatové oceli / Free-cutting steels <800N/mm ²	8-10	10-12	12-15
P2.2	Konstrukční oceli / Structural steels <800N/mm ²	8-10	10-12	12-15
P2.3	Nelegované lité oceli / Plain cast steels <800N/mm ²	8-10	10-12	12-15
N7.1	Čistý hliník / Unalloyed aluminium	8-10	10-15	
N8.1	Legovaný hliník / Aluminium alloys Si<10%	8-10	10-15	
N8.2	Legovaný hliník / Aluminium alloys Si>10%	8-10	10-15	

