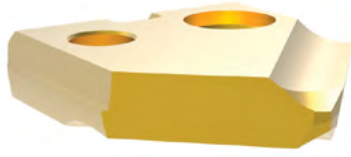
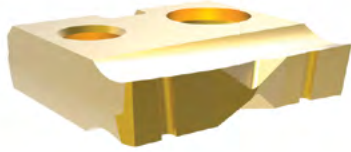
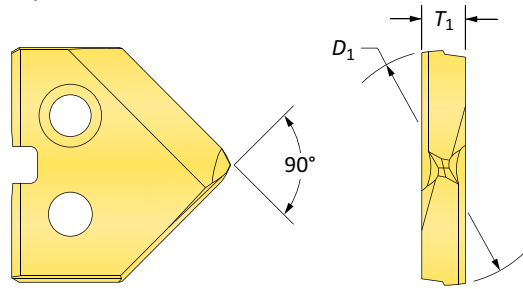
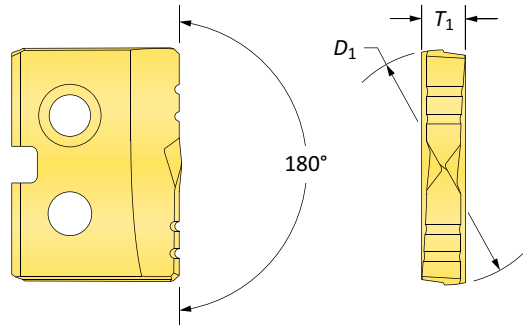






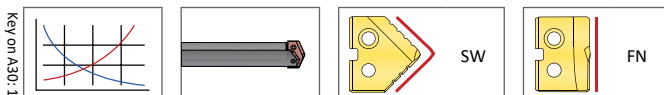
T-A® Original Drill Inserts

Z Series | HSS | Diameter Range: 11.10mm - 12.95mm (0.437" - 0.510")


90° Spot & Chamfer

Flat Bottom

HSS Inserts – Super Cobalt

Insert				90° Spot & Chamfer Part No.			Flat Bottom Part No.
D_1 mm	D_1 inch	Fractional Equivalent	T_1 mm	 TiN	 TiAlN	 TiCN	 TiN
11.11	0.4375	7/16	2.38	15ZT-0014-SP	15ZA-0014-SP	15ZN-0014-SP	15ZT-0014-FB
11.46	0.4510	–		15ZT-.451-SP	15ZA-.451-SP	15ZN-.451-SP	15ZT-.451-FB
11.50	0.4528	–		15ZT-11.5-SP	15ZA-11.5-SP	15ZN-11.5-SP	15ZT-11.5-FB
11.51	0.4531	29/64		15ZT-.453-SP	15ZA-.453-SP	15ZN-.453-SP	15ZT-.453-FB
11.91	0.4688	15/32		15ZT-0015-SP	15ZA-0015-SP	15ZN-0015-SP	15ZT-0015-FB
12.00	0.4724	–		15ZT-12-SP	15ZA-12-SP	15ZN-12-SP	15ZT-12-FB
12.30	0.4844	31/64		15ZT-.484-SP	15ZA-.484-SP	15ZN-.484-SP	15ZT-.484-FB
12.50	0.4921	–		15ZT-12.5-SP	15ZA-12.5-SP	15ZN-12.5-SP	15ZT-12.5-FB
12.70	0.5000	1/2		15ZT-0016-SP	15ZA-0016-SP	15ZN-0016-SP	15ZT-0016-FB
12.85	0.5060	–		15ZT-.506-SP	15ZA-.506-SP	15ZN-.506-SP	15ZT-.506-FB
12.95	0.5100	–		15ZT-.510-SP	15ZA-.510-SP	15ZN-.510-SP	15ZT-.510-FB

- Ideální pro zploštění nebo vyrovnání dna již existujícího otvoru s vysokou tuhostí.
- Obsahuje malý 10° bod na středu destičky



Coatings not listed above can be supplied as non-stocked standards.

Inserts sold in quantities of 2

TiN = 131T-XXXX	TiAlN = 131A-XXXX
TiCN = 131N-XXXX	AM200® = 131H-XXXX

 Z
A DRILLING
B BORING
C REAMING
D BURISHING
E THREADING
X SPECIALS