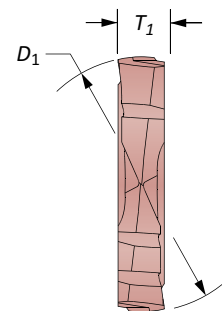
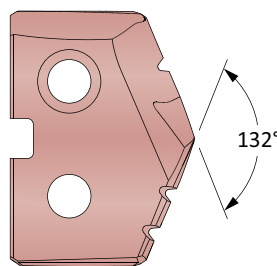
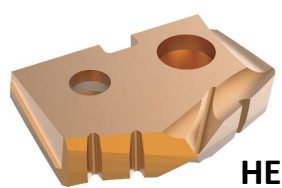
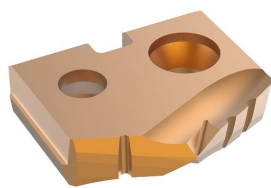
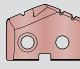
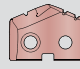
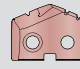


GEN2 T-A® Drill Inserts

1 Series | Diameter Range: 17.53mm - 24.38mm (0.690" - 0.960")



Carbide Inserts – K20 (C2) | K35 (C1), Coat AM300

| Series | Insert | | | T ₁ mm | Carbide Part No. | | |
|--------|-------------------|---------------------|-----------------------|-------------------|---|--|--|
| | D ₁ mm | D ₁ inch | Fractional Equivalent | |  K20 (C2) |  K35 (C1) |  K35 (C1) |
| 1 | 17.86 | 0.7031 | 45/64 | 4.00 | 4C21P-.703 | 4C11P-.703 | 4C11P-.703 - HE |
| | 18.00 | 0.7087 | – | | 4C21P-18 | 4C11P-18 | 4C11P-18 - HE |
| | 18.26 | 0.7188 | 23/32 | | 4C21P-0023 | 4C11P-0023 | 4C11P-0023 - HE |
| | 18.50 | 0.7283 | – | | 4C21P-18.5 | 4C11P-18.5 | 4C11P-18.5 - HE |
| | 18.65 | 0.7344 | 47/64 | | 4C21P-.734 | 4C11P-.734 | 4C11P-.734 - HE |
| | 19.00 | 0.7480 | – | | 4C21P-19 | 4C11P-19 | 4C11P-19 - HE |
| | 19.05 | 0.7500 | 3/4 | | 4C21P-0024 | 4C11P-0024 | 4C11P-0024 - HE |
| | 19.45 | 0.7656 | 49/64 | | 4C21P-.765 | 4C11P-.765 | 4C11P-.765 - HE |
| | 19.50 | 0.7677 | – | | 4C21P-19.5 | 4C11P-19.5 | 4C11P-19.5 - HE |
| | 19.84 | 0.7813 | 25/32 | | 4C21P-0025 | 4C11P-0025 | 4C11P-0025 - HE |
| | 20.00 | 0.7874 | – | | 4C21P-20 | 4C11P-20 | 4C11P-20 - HE |
| | 20.24 | 0.7969 | 51/64 | | 4C21P-.796 | 4C11P-.796 | 4C11P-.796 - HE |
| | 20.34 | 0.8010 | – | | 4C21P-.801 | 4C11P-.801 | 4C11P-.801 - HE |
| | 20.50 | 0.8071 | – | | 4C21P-20.5 | 4C11P-20.5 | 4C11P-20.5 - HE |
| | 20.64 | 0.8125 | 13/16 | | 4C21P-0026 | 4C11P-0026 | 4C11P-0026 - HE |
| | 21.00 | 0.8268 | – | | 4C21P-21 | 4C11P-21 | 4C11P-21 - HE |
| | 21.43 | 0.8438 | 27/32 | | 4C21P-0027 | 4C11P-0027 | 4C11P-0027 - HE |
| 21.50 | 0.8465 | – | 4C21P-21.5 | 4C11P-21.5 | 4C11P-21.5 - HE | | |
| 1.5 | 21.83 | 0.8594 | 55/64 | 4.00 | 4C21P-.859 | 4C11P-.859 | 4C11P-.859 - HE |
| | 22.00 | 0.8661 | – | | 4C21P-22 | 4C11P-22 | 4C11P-22 - HE |
| | 22.23 | 0.8750 | 7/8 | | 4C21P-0028 | 4C11P-0028 | 4C11P-0028 - HE |
| | 22.50 | 0.8858 | – | | 4C21P-22.5 | 4C11P-22.5 | 4C11P-22.5 - HE |
| | 20.62 | 0.8906 | 57/64 | | 4C21P-.890 | 4C11P-.890 | 4C11P-.890 - HE |
| | 23.00 | 0.9055 | – | | 4C21P-23 | 4C11P-23 | 4C11P-23 - HE |
| | 23.02 | 0.9063 | 29/32 | | 4C21P-0029 | 4C11P-0029 | 4C11P-0029 - HE |
| | 23.42 | 0.9219 | 59/64 | | 4C21P-.921 | 4C11P-.921 | 4C11P-.921 - HE |
| | 23.50 | 0.9252 | – | | 4C21P-23.5 | 4C11P-23.5 | 4C11P-23.5 - HE |
| | 23.81 | 0.9375 | 15/16 | | 4C21P-0030 | 4C11P-0030 | 4C11P-0030 - HE |
| | 24.00 | 0.9449 | – | | 4C21P-24 | 4C11P-24 | 4C11P-24 - HE |

NOTE: 1.5 series inserts fit into both 1 and 1.5 series holders. However, 1 series inserts ONLY fit into 1 series holders. See page A30: 7 for visual.

Destičky série 1,5 se vejdou do držáků série 1 i 1,5. Destičky série 1 se vkládají pouze do držáků série 1.

Standard

- Nabízí podstatné zvýšení míry životnosti nástroje
- Zlepšuje centrování, stabilitu vrtáku, tvorbu třísek, a snižuje vrtací síly
- Poskytuje hladší vylamování průchozí díry



Vysoká pružnost (-HE)

- Vynikající utváření třísky v materiálech s velmi vysokou pružností/tažností a špatné podmínky pro utváření třísek
- Efektivní u strojů s nižším výkonem
- Příklad materiálu: nízkouhlíková ocel (není vhodné pro nerezovou ocel)



Coatings not listed above can be supplied as non-stocked standards.

| | |
|--|--------------------|
| | |
| | AM200® = 131H-XXXX |

Inserts sold in quantities of 2