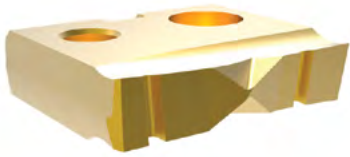
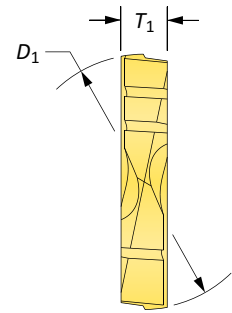
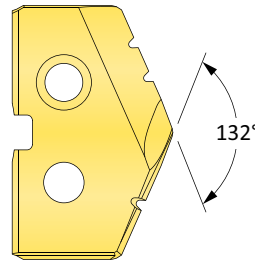
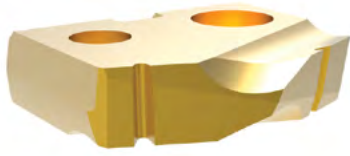
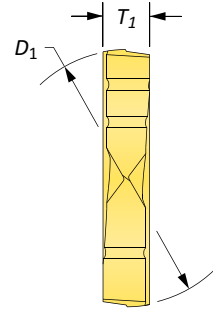
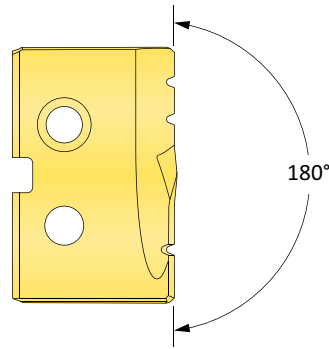


## T-A® Original Drill Inserts

0 Series | Carbide | Diameter Range: 12.98mm - 17.65mm (0.511" - 0.695")



Flat Bottom



### Carbide Inserts – K20 (C2)

Series	Insert				Part No.		Flat Bottom Part No.
	D <sub>1</sub> mm	D <sub>1</sub> inch	Fractional Equivalent	T <sub>1</sub> mm	TiN	TiAlN	TiN
0	13.00	0.5118	–	3.18	1C20T-13	1C20A-13	1C20T-13-FB
	13.10	0.5156	33/64		1C20T-.515	1C20A-.515	1C20T-.515-FB
	13.49	0.5313	17/32		1C20T-0017	1C20A-0017	1C20T-0017-FB
	13.50	0.5315	–		1C20T-13.5	1C20A-13.5	1C20T-13.5-FB
	13.89	0.5469	35/64		1C20T-.546	1C20A-.546	1C20T-.546-FB
	14.00	0.5512	–		1C20T-14	1C20A-14	1C20T-14-FB
	14.29	0.5625	9/16		1C20T-0018	1C20A-0018	1C20T-0018-FB
	14.50	0.5709	–		1C20T-14.5	1C20A-14.5	1C20T-14.5-FB
	14.68	0.5781	37/64		1C20T-.578	1C20A-.578	1C20T-.578-FB
	15.00	0.5906	–		1C20T-15	1C20A-15	1C20T-15-FB
0.5	15.08	0.5938	19/32	3.18	1C20T-0019	1C20A-0019	1C20T-0019-FB
	15.48	0.6094	39/64		1C20T-.609	1C20A-.609	1C20T-.609-FB
	15.50	0.6102	–		1C20T-15.5	1C20A-15.5	1C20T-15.5-FB
	15.88	0.6250	5/8		1C20T-0020	1C20A-0020	1C20T-0020-FB
	16.00	0.6299	–		1C20T-16	1C20A-16	1C20T-16-FB
	16.27	0.6406	41/64		1C20T-.640	1C20A-.640	1C20T-.640-FB
	16.50	0.6496	–		1C20T-16.5	1C20A-16.5	1C20T-16.5-FB
	16.67	0.6563	21/32		1C20T-0021	1C20A-0021	1C20T-0021-FB
	17.00	0.6693	–		1C20T-17	1C20A-17	1C20T-17-FB
	17.07	0.6719	43/64		1C20T-.671	1C20A-.671	1C20T-.671-FB
	17.46	0.6875	11/16		1C20T-0022	1C20A-0022	1C20T-0022-FB
	17.50	0.6890	–		1C20T-17.5	1C20A-17.5	1C20T-17.5-FB

**NOTE:** 0.5 series inserts fit into both 0 and 0.5 series holders. However, 0 series inserts ONLY fit into 0 series holders. See page A30: 7 for visual.

A30: 114 - 145

Key on A30: 1

A30: 38 - 42

A30: 4 - 6

HI, HR, CR, TC, SK,  
NP, IN, RN, CN, AN,  
BR, CI, CP, NC, WC

A30: 4 - 6

FN

Coatings not listed above can be supplied as non-stocked standards.

Inserts sold in quantities of 2

TiN = 131T-XXXX	TiAlN = 131A-XXXX
TiCN = 131N-XXXX	AM200® = 131H-XXXX