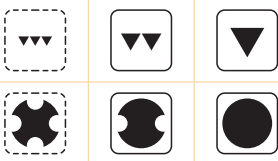
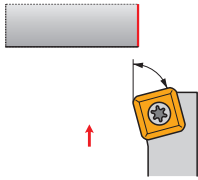
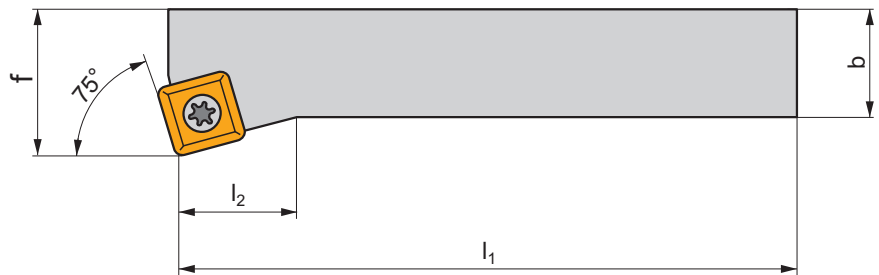
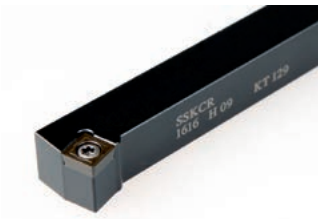


SSKC(RL) EXT
P M K N S H


ISO	$h=h_1$	b	f	l_1	l_2	λ_s°	γ°	kg		
SSKCR/L 1212 F 09	12	12	16	80	32,0	0	0	0,10	GI053	S08
SSKCR/L 1616 H 09	16	16	20	100	32,0	0	0	0,20	GI053	S08
SSKCR/L 2020 K 12-M-A	20	20	25	125	36,0	0	0	0,40	GI015	SS20
SSKCR/L 2525 M 12-M-A	25	25	32	150	36,0	0	0	0,75	GI015	SS20



GI015

SC.. 1204..

GI053

SC.. 09T3..



S08

US 3510-T15P

3,0

M3,5

10,6

-

-

FLAG T15P

-

SS20

US 5012-T15P

5,0

M5

12,2

SSN 120304

MS 5008

FLAG T15P

HXK 5