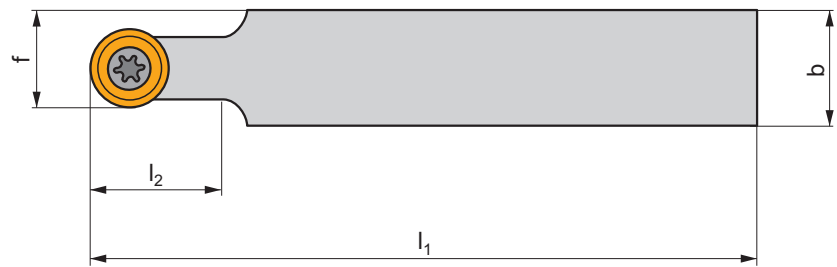
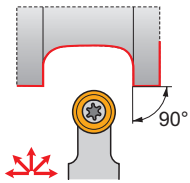
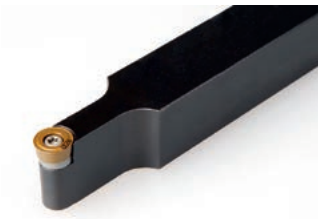


SRDCN EXT

P M K N S H

S



ISO	$h=h_1$	b	f	l_1	l_2	λ_s°	γ°	kg		
SRDCN 1212 F 06	12	12	9	80	12,0	0	0	0,10	GI054	SO1
SRDCN 1616 H 06	16	16	11	100	12,0	0	0	0,20	GI054	SO1
SRDCN 2020 K 08	20	20	14	125	20,0	0	0	0,40	GI051	SO3
SRDCN 2020 K 10-M-A	20	20	15	125	25,0	0	0	0,40	GI013	SR10
SRDCN 2020 K 1003-M-A	20	20	15	125	25,0	0	0	0,40	GI064	SR10
SRDCN 2525 M 10-M-A	25	25	17,5	150	25,0	0	0	0,70	GI013	SR10
SRDCN 3225 P 10-M	32	25	17,5	170	25,0	0	0	0,90	GI013	SR10
SRDCN 2525 M 12-M-A	25	25	18,5	150	30,0	0	0	0,70	GI014	SR12
SRDCN 3225 P 12-M	32	25	18,5	170	30,0	0	0	0,90	GI014	SR12
SRDCN 3225 P 16-M	32	25	20,5	170	32,0	0	0	1,00	GI161	SR16



GI013	RC.. 10T3MO
GI014	RC.. 1204MO
GI051	RC.. 0803MO
GI054	RC.. 0602MO
GI064	RC.. 1003MO
GI161	RC.. 1606MO



SO1	US 2506-T07P	0,9	M2,5	6,5	-	-	FLAG T07P	-
SO3	US 3007-T09P	2,0	M3	7,4	-	-	FLAG T09P	-
SR10	US 3510-T15P	3,0	M3,5	10,6	SRN 100300	MS 3510	FLAG T15P	HXK 3,5
SR12	US 3510-T15P	3,0	M3,5	10,6	SRN 120300	MS 3510	FLAG T15P	HXK 3,5
SR16	US 5018-T20P	5,0	M5	18,2	SRN 16T3MO	MS 5015	FLAG T20P	HXK 5